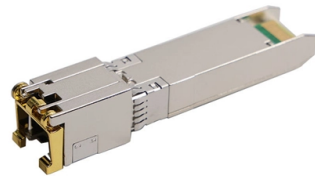


Power outage at public distribution box



Overview

A power outage could be as a result of scheduled maintenance in the area by your distribution network operator (DNO), or due to extreme weather conditions affecting supply. If you believe you are experiencing a power outage, you can contact your DNO to report an incidence. Areas affected: LN3, LN4. Areas affected: NG34. Areas affected: EX15, EX16. Areas affected: TQ13. Areas affected: NG17. Areas affected: GL19, GL2. Areas affected: B37. Areas affected: EX20. Use this page to see if there is currently a power cut in your area of the UK. Click/tap your region on the map for live power cut information. Power cuts do happen from. We're open 24 hours a day, 365 days a year. Track the progress of reports through a chart that shows. To provide a reliable electricity supply to your property, we carry out regular inspections of our equipment in your area. This has identified cables that need upgrading.



Article Content

Everything You Need to Know About Temporary Power

What are some common applications for temporary power distribution boxes? We'll explain how they work and benefit your business. Learn more here!

Explore Power Distribution Box Types and Functions

Power distribution boxes are used in commercial and residential buildings and are part of the electrical system, also known as switchboards.

UK Power Cut Checker

The map features links to live UK power outage data so you can find out if there is a power cut today in your area and if there is an estimated time for a resolution.

England Power Outages Map

Check out the current power outage schedule for England (United Kingdom), featuring detailed timings and updates to help you stay informed and ready for any disruptions.

GUIDEBOOK

This guidebook is for public power utility staff and others tasked with restoration operations and emergency management. The Restoration Best Practices Guidebook documents best practices at

Power Outage Safety | American Red Cross

For prolonged power outages, there are steps you can take to minimize food loss and to keep all members of your household as comfortable as possible.

What is a power distribution unit (PDU)?

A power distribution unit (PDU) is a device for controlling data center electrical power. The most basic PDUs are large power strips without surge protection. They are designed to provide

The Importance of Distribution Boxes in Electrical Systems

A distribution box is an exposed or concealed metal box that houses the circuit breakers that regulate the distribution of electricity throughout a

Live power cut list

A customer has asked UK Power Networks to switch off the power so they can safely cut back trees in the area that have grown close to overhead

What To Do During an Power Outage

A power outage could be as a result of scheduled maintenance in the area by your distribution network operator (DNO), or due to extreme weather conditions affecting supply. If you

How to find out if there's a power cut and claim

How to report a power outage You can also go to your local network operator's website to find out whether a power cut has been registered yet, and

Understanding Distribution Boxes: Your Guide to Power

Weatherproof Distribution Boxes These serve specific outdoor purposes, with rain, dust, and extreme temperatures sealed shut, protecting any

What are the common problems of distribution boxes?

In summary, the distribution box may encounter a variety of problems during operation, which not only affect the normal operation of the power system,

Understanding Distribution Boxes: A Comprehensive Guide

A distribution box, also known as a power distribution box or electrical distribution box, is used to distribute electrical power safely to multiple

Power cuts

Power cuts Power cuts (or electricity outages) can have a number of causes including severe weather, which can lead to damaged infrastructure, or system

What Is an Electrical Distribution Box? A Complete Guide

What Is an Electrical Distribution Box? An electrical distribution box serves as a centralized unit for distributing electrical power within

Power cuts

We're open 24 hours a day, 365 days a year. Simply call us on 105 or damage to our equipment or report your power cut online below. We promise to restore your power as soon as we can and we're

Live power cut information: London, East Anglia, South

Enter your postcode to search, track and report power cuts, power outages and blackouts in London, East Anglia and South East.

Power outage today in United Kingdom| Check our real-time map

Our map is a reliable companion, especially during widespread outages or when you need quick insights about power cuts today in places like London, East Anglia, or South East England.

View and Report Outages

View and Report Outages When the occasional outage occurs, we're here to help you be prepared, stay informed, and stay safe while our crews are working around the clock to restore power. Report an

United Kingdom Power Outage Map

Explore power outage schedules across the United Kingdom with our ongoing project. Click on a state to view detailed electricity outage timelines. Data is updated approximately once every hour across the

National Grid

Areas affected: EX15, EX16 Areas affected: TQ13 Areas affected: NG17 Areas affected: GL19, GL2 Areas affected: B37 Areas affected: EX20

Electrical Power Distribution Boxes for Temporary Event

Conclusion Power distribution boxes are an integral part of any temporary event setup, ensuring that power is delivered safely and efficiently to

Power Distribution Box Essentials: Functions, Types

7) Considerations for choosing a power distribution box The context, security needs, and purpose all play a vital role in deciding a power distribution

5 Benefits of Using a Temporary Distribution Box

If you're looking for a safe, efficient way to power equipment for outdoor job sites or events, read these benefits of using a temporary distribution

Power Outage Map

Report Power Outage The outage map on this page will not display if your internet browser options are set to only display secure data.

What does a power distribution box do ?

The main function of the distribution box is to receive power and distribute it to various circuits. It can protect circuits, regulate voltage, and isolate and control

What is a power distribution box?

Sometimes referred to as a power distribution unit ("PDU") or simply a distro, a power distribution box is used to safely distribute electricity from the power source to other devices in a circuit. It typically has

Contact Us

For more information, pricing, or custom solutions, please contact us:

Website: <https://www.charratcommunication.fr>

Email: sales@charratcommunication.fr

Phone: +33 1 42 68 93 17

Address: 15 Rue de la Paix, 75002 Paris, France

This document is for informational purposes only. Specifications subject to change without notice.

