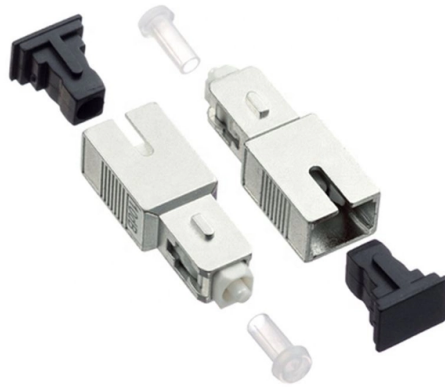


Installation Requirements for Protective Netting on Distribution Boxes



Overview

Check for proper IP/NEMA ratings and material quality. Ensure safe placement: install in dry, accessible areas with good ventilation and at appropriate height (typically ~1. Practice good wiring: secure grounding, neat cable management, proper insulation, and correct wire. It takes the incoming power and safely distributes it to different circuits throughout your building. Whether in a home or an industrial facility, this box keeps your electrical setup organized, functional, and efficient. Personal fall arrest nets must comply with the safety requirements of the EN 1263-1. EN 1263-2 and DGUV regulation 101-011 apply to the erection and installation of safety nets. They are typically used for construction work at great heights, such as hall. The installation requirements and specifications of Distribution box involve many aspects, including site selection, fixing method, wiring specifications and safety protection. Site selection requirements: The distribution box should be installed in an area close to the power supply to reduce. The Committee on National Security Systems (CNSS) issues this Instruction pursuant to its authority under National Security Directive 42, National Policy for the Security of National Security Telecommunications and Information Systems. This Instruction provides guidance and requirements for the. Safety nets shall be provided when workplaces are more than 25 feet above the ground or water surface, or other surfaces where the use of ladders, scaffolds, catch platforms, temporary floors, safety lines, or safety belts is impractical.

Article Content

Safety requirements for distribution box

4□ All kinds of electrical components and leakage protectors used in distribution boxes at all levels shall meet the quality requirements of national standards. 5□ The leakage protectors in distribution boxes

Summary of key points for construction and installation of distribution ...

The construction and installation points of distribution boxes and switch boxes are summarized as follows: 1. Select qualified products that meet national standards and safety requirements.

Requirements And Specifications For Installation Of

The installation requirements and specifications of Distribution box involve many aspects, including site selection, fixing method, wiring specifications

Installation Standards and Safety Precautions for Distribution Boxes ...

12. Power distribution box and lighting distribution box should be set up separately, such as combined in the same distribution box, power and lighting lines should be set up separately. 13.

Grounding System Installation Standards for Distribution Boxes and ...

Hey there! If you're working with electrical systems, you know that grounding isn't just some bureaucratic requirement—it's literally the difference between a safe, functional system and a potential disaster.

How to Install a Cable Distribution Box Safely and

In modern electrical systems, cable distribution boxes (also known as electrical distribution boxes or distribution boxes) play a crucial role as the key

Understanding Distribution Boxes: A Comprehensive Guide

Choosing the right distribution box depends on the installation environment, protection requirements, system load, and enclosure material. A

PROTECTED DISTRIBUTION SYSTEMS (PDS)

This Instruction provides guidance and requirements for the approval and installation of wire line and optical fiber distribution systems used to protect unencrypted, National security information (NSI)

Transformer and Distribution Cabinet Equipment

2.1 Pre-installation Requirements for Complete Distribution Cabinets, Control Cabinets, and Distribution Boxes: - The indoor ceiling and wall decoration

Explosion-Proof Distribution Boxes: Special Installation Requirements

Seven workers vanished after a deafening blast tore through a California fireworks facility last July – a chilling reminder of why explosion-proof electrical equipment installation isn't just regulation, it's life

Safety requirements of distribution box

The distribution box has the characteristics of small size, simple installation, special technical performance, fixed location, unique configuration function, not limited by

The Complete Guide to Distribution Box: Installation, Types & More

Making Smart Electrical Infrastructure Decisions Distribution boxes form the foundation of safe and reliable electrical systems. Understanding their components, installation requirements, and

Latest Requirements for Distribution Box Installation under the US

When Professional Installation Matters Most While DIY electrical work has its place, distribution box installation isn't it. Consider these real cases: The Lakehouse Disaster: After saving

Installation Standards and Safety Precautions for Distribution Boxes ...

Distribution boxes, switch boxes should be installed in dry, ventilated and room temperature places; shall not be installed in the role of serious damage to the gas, smoke, vapour,

Latest Requirements for Distribution Box Installation under the US

The latest NEC updates prioritize adaptive solutions for modern energy demands. With homes now packing solar arrays, EV chargers, and smart-home systems, distribution boxes work

1.An Ultimate Guide for Metal Distribution Boxes

1) Metal Distribution Boxes Constructed from steel, aluminum, or cast iron, metal distribution boxes are highly durable and resistant to mechanical damage. Ideal

How to Improve the Installation Quality of Distribution Boxes

Learn key methods to enhance distribution box installation quality, including location, height, wiring, and safety compliance.

Quality Control for Installation and Construction of Electrical Riser ...

Master the key quality control methods for electrical riser & distribution box installation. Ensure safety, compliance, and prevent hazards in building electrical systems.

Instructions for the installation of safety nets

Personal fall arrest nets must comply with the safety requirements of the EN 1263-1. EN 1263-2 and DGUV regulation 101-011 apply to the erection and installation of safety nets. Safety nets are used

Technical Specifications for Distribution Boxes and Switch Boxes

This document sets forth technical, installation and safety specifications for distribution boxes, switch boxes and cabinets. It stipulates requirements for enclosure materials, installation dimensions, the

How to Install a Cable Distribution Box Safely and

This article provides a detailed overview of the entire process of installing a distribution box, from pre-installation preparation to post-installation

Key Points Of Installation And Collocation Of Distribution Box In ...

If they are combined in the same distribution box, power and lighting lines should be set separately. 7. The wire inlets and outlets in the distribution box and switch box shall be set at the lower bottom of

Design requirements and standards for low voltage

You protect people and equipment when you follow design requirements for low voltage distribution boxes. Always check NEC, IEC, and

1926.105

The mesh size of nets shall not exceed 6 inches by 6 inches. All new nets shall meet accepted performance standards of 17,500 foot-pounds minimum impact resistance as determined and

Contact Us

For more information, pricing, or custom solutions, please contact us:

Website: <https://www.charratcommunication.fr>

Email: sales@charratcommunication.fr

Phone: +33 1 42 68 93 17

Address: 15 Rue de la Paix, 75002 Paris, France

This document is for informational purposes only. Specifications subject to change without notice.

