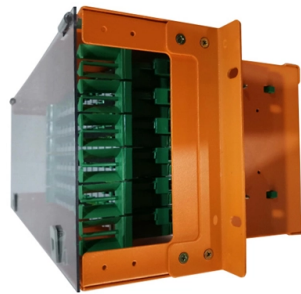


How to quickly ground a distribution box



Overview

Attach a ground wire from one of the threaded studs (A) at the bottom of the housing, to the mounting plate (B). The ground resistance between all system parts shall be $<$. Power from factory ground must be installed by a qualified electrician.

Each DISTRIBUTION BOX and controller must be grounded. 26 mm² (10 AWG) ground wire must be used, and in all other markets a 6 mm² must be used.

Preparation: First, you need to prepare some necessary tools, including grounding wire, grounding rod, voltmeter, insulating gloves and insulating tools. Make sure all tools are intact to prevent accidents during the grounding. Safety of Personnel: By safely channeling fault currents into the ground, proper grounding helps to reduce the risk of electric shock to personnel. During fault conditions, low impedance results in high fault current flow, causing overcurrent protective. Connect one end of the insulated copper wire to the grounding grid and lead the other end into the distribution box and connect it to the ground bus bar of the distribution box.

Article Content

Method for making the ground wire of a household distribution box

Connect one end of the insulated copper wire to the grounding grid and lead the other end into the distribution box and connect it to the ground bus bar of the distribution box.

DISTRIBUTION BOX

Each DISTRIBUTION BOX and controller must be grounded. On the US market, a 5.26 mm² (10 AWG) ground wire must be used, and in all other markets a 6 mm² must be used.

Grounding Bar for Electrical Boxes | Installation & Sizing Guide

Learn how to select and install a grounding bar for electrical boxes, including sizing tips and ground bar options for metal enclosures.

How To Properly Ground An Electrical Box

Without proper grounding, an electrical box can become a fire hazard. To prevent dangerous accidents from happening, it is essential to understand

How To Run A Ground Wire To An Electrical Panel Box

Your service panel's ground wire prevents a line fault from becoming a shocking experience. By shunting excess line voltage back to the panel's neutral pole, the ground current

How To Ground A Circuit Breaker Box Safely: A Step-by

This causes a large surge of current, quickly tripping the circuit breaker or blowing a fuse, thereby de-energizing the circuit and preventing a

How To Ground An Electrical Panel: 8 Steps With Video

Electrical panel grounding is one of the most important factors regarding electrical safety. While a ground wire is not strictly necessary for

Grounding in Power Transmission and Distribution Networks

Power transmission and distribution systems are earthed for electric shock and fault protection. This chapter presents the principles and practices of grounding for power systems.

Grounding Practices in Power Distribution Systems

The installation of grounding methods for transmission lines is absolutely necessary in order to guarantee the safety, dependability, and effectiveness of power

How to Ground Electrical Wires

How to Ground Wires in Plastic Boxes Where plastic boxes are used, a ground wire typically connects to the receptacle only. Here, where wiring runs

Electrical Box Ground Wire Connectors & Connections

How to make proper & safe electrical ground wiring connections in the box: This article describes options for connecting a metal electrical box to the grounding conductor & connecting the grounding

How to Ground an Electrical Panel: A Complete Guide

Learn how to ground an electrical panel step-by-step. Ensure safety, code compliance, and protect your home from electrical hazards.

9 Recommended Practices for Grounding

Use equipment grounding conductors sized equal to the phase conductors to decrease circuit impedance and improve the clearing time of

The Importance of Ground Wires in the Breaker Box: A

The ground wire in a breaker box is a crucial element of an electrical system, providing safety and preventing electrical shocks. Learn more about its

How do you ground a plastic electrical box

Here are the steps on how to ground a power distribution box: 1. Preparation: First, you need to prepare some necessary tools, including

Correct Connection Method Of Grounding Wire Of

Generally, copper core wire is selected as the ground wire and connected to the PE wiring bar. When connecting, it is necessary to strip the wire

Grounding system construction: key points for grounding distribution ...

Everything looks perfect until the moment of truth arrives. That's why today we'll break down the life-or-death details of grounding distribution boxes and cable shielding layers using plain

Nine Recommended Practices for Grounding

Electrical Grounding Techniques Grounding and bonding are the basis upon which safety and power quality are built. The grounding system provides a

Grounding Practices in Power Distribution Systems

High-Resistance Grounding (HRG): To provide a safe amount of ground fault current, HRG systems employ a high-resistance grounding resistor. This approach keeps

How do you ground a plastic electrical box

Overall, grounding a plastic distribution box is a process that requires specialized knowledge and skill. If you are not sure how to proceed, you should

How to ground the low voltage distribution box?

How should the low-voltage distribution box be grounded? Now let's explain the grounding mode of low-voltage distribution box?

The Best Way To Ground An Electrical Box | Up To Code!

If grounding has not been done correctly, or not at all, there can be a high risk of electrical current running through the metal junction box that could result in a pretty fatal injury.

How to Install a Cable Distribution Box Safely and

In modern electrical systems, cable distribution boxes (also known as electrical distribution boxes or distribution boxes) play a crucial role as the key

how do you ground a plastic electrical box

2. Check the distribution box: Before you start grounding, you need to check the condition of the distribution box. If there is any damage or cracks in the

The installation requirements for the distribution box

A clean and well-wired distribution box isn't just nice to look at — it's essential for safety, performance, and easy maintenance. Here are a few best

Contact Us

For more information, pricing, or custom solutions, please contact us:

Website: <https://www.charratcommunication.fr>

Email: sales@charratcommunication.fr

Phone: +33 1 42 68 93 17

Address: 15 Rue de la Paix, 75002 Paris, France

This document is for informational purposes only. Specifications subject to change without notice.

