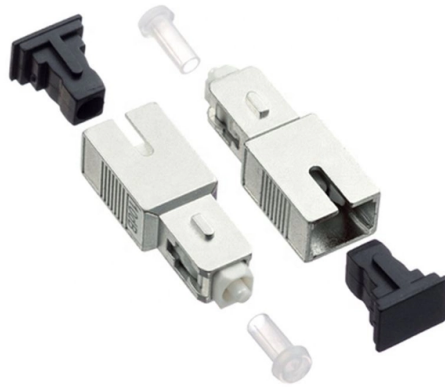


# How to build a fixed electrical distribution box using bricks



## Overview

In this article, we'll walk you through the entire process of installing a brick electrical box, from selecting the perfect location to making secure wiring connections. We'll cover essential topics such as choosing the correct materials, preparing your workspace, and executing. This article will provide step-by-step instructions on how to install an electrical box in a brick wall. Installing an electrical box in a brick wall is not a difficult task, but it does require careful planning and attention to detail. With the right tools and knowledge, you'll be able to safely and efficiently complete this project. Basically just take all of your boards and terminal strips and such and tape or set them in place to figure where they fit. Safety remains crucial during installation. Moisture in masonry walls, drilling into dense surfaces, and securing the box on uneven or brittle areas.



## Article Content

### How to Build an Electric Distribution Box

Building an electric distribution box can be a useful and rewarding DIY project for those who are familiar with electrical wiring and safety procedures.

### How to Make an Electrical Junction Box: Step-by-Step

Learn how to make an electrical junction box with this step-by-step guide. Get expert tips on materials, wiring, and installation safety.

### How To Install An Exterior Outlet In Brick

Use a pencil or marker to draw a rectangle around the area where the outlet will go. Then, drill a hole into the brick using a masonry bit. This hole

### Temporary Job Site Power Box - Plans to build your own

Have you ever been frustrated by a lack of power available at your job sites? Look no further than this custom designed Temp Power Box to handle all

Size determination, installation method and wiring mode

The distribution box is the central hub of the home circuit and the general control of our daily power consumption. It is an indispensable electrical equipment. If there

### Power Distribution Box : 5 Steps (with Pictures)

Power Distribution Box: For starters, I built a rack for my truck to throw some "off road" lights on.& nbsp; I wanted a box to control these and some reverse

### How to Install an Efficient Masonry Electrical Box

When installing a masonry electrical box, it is essential to use non-conductive materials, such as plastic or non-metallic boxes, to prevent electrical currents from conducting through the

### The Complete Guide to Distribution Box: Installation, Types & More

A distribution box, also known as a distribution board, electrical panel, or breaker box, is an enclosure that houses electrical components responsible for distributing electricity throughout a

### Embedded Installation Of Distribution Box

According to the installation size of wall mounted (surface mounted) terminal combination electrical appliances, first drill bolt holes or embedded wood bricks, then open the upper cover of the

### How to Build a DIY Power Distribution Box

Comprehensive guide to designing, calculating loads, building, and ensuring code compliance for your DIY power distribution system.

How To Mount An Exterior Electrical Box To Brick?

The trick I have found with mounting the box on brick is to make sure that the box anchors go into actual brick, while aiming the electrical cable for the mortar.

Understanding Distribution Boxes: Your Guide to Power

What are Distribution Boxes and Their Importance? What are Distribution Boxes and Their Importance? Distribution boxes, or electrical junction

A Pro's Guide to Building a Custom Electrical

Let's be crystal clear: working with electricity is extremely dangerous and can result in severe injury, fire, or death. This post is a case study of a

Making A DIY Power Distribution Box

In this case, I will attempt to use KiCad, Autodesk Fusion, Bambu Lab X1 Carbon, and Mouser Electronics to build a power distribution box for my 3 Viltrox DC-550 Pro field monitors.

How to mount a waterproof electrical box on brick or

You achieve the best results mounting a waterproof electrical box on brick or concrete when you use the correct tools and high-quality materials.

The installation requirements for the distribution box

A distribution box is the heart of any electrical system. It takes the incoming power and safely distributes it to different circuits throughout your

Power Distribution Box : 5 Steps (with Pictures)

For starters, I built a rack for my truck to throw some "off road" lights on. I wanted a box to control these and some reverse lights. I also got an old remote starter from

Distribution Box Installation: A Complete Guide to Safe

Proper installation of a distribution box ensures electrical safety, efficiency, and reliability. In this comprehensive guide, we'll cover everything you need to know

Install a Brick Electrical Box with Ease - A Step-by-Step

Discover how to install a brick electrical box safely and efficiently with our comprehensive step-by-step guide, covering location selection, material

on video How to Wire a Home Distribution Box

The above mentioned electrical wiring accessories and protective devices are used to control and distribute electric supply (safely to connected electrical appliances)

## Understanding Distribution Boxes: A Comprehensive Guide

A distribution box, also known as a power distribution box or electrical distribution box, is used to distribute electrical power safely to multiple

## How to Build a DIY Temporary Power Distribution Box

A temporary power distribution box (TPDB), often called a spider box, functions as a portable electrical hub that centralizes and protects power distribution on a job site. This device

electrical

A power distribution box would be nice for connecting different loads to a generator at an off-grid job or camp site. But commercial units are big, heavy, and expensive, and they offer some

## How To Install Electrical Box In Brick Wall

With the right tools and knowledge, you can install an electrical box in a brick wall safely and efficiently. This article will provide step-by-step instructions on how to install an electrical box in a

## HOW DO YOU INSTALL ELECTRICAL CONDUIT IN

The following points are the sequence of operations for the safe installation of PVC / GI pipes and components in bricks/block masonry according to standard

## Contact Us

For more information, pricing, or custom solutions, please contact us:

Website: <https://www.charratcommunication.fr>

Email: [sales@charratcommunication.fr](mailto:sales@charratcommunication.fr)

Phone: +33 1 42 68 93 17

Address: 15 Rue de la Paix, 75002 Paris, France

This document is for informational purposes only. Specifications subject to change without notice.

