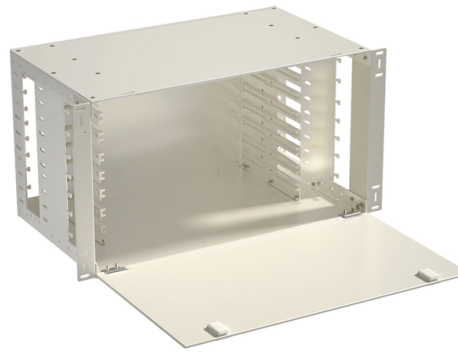


Dimensions of Construction Distribution Box Bracket



Overview

6 x socket Schuko 2p+E 230V Dimensions 1500x600x630mm (incl. All the details can be found in the drawing Drawing n° MF4-D43: Example: Find details about the DB in the sketch map of the network: Number and diameters of outlets are written inside the DB sketch. Inlet diameter is the same as the DB upstream pipe. If the pipe has different diameters, the inlet. This document provides specifications for various distribution boxes including dimensions, mounting sizes, and number of ways. Dimensions included are length, width. are 10 major types of electrical boxes used in Canada.) Communication devices concealed within a box or no the depth of the box is limited by the wall thickness. Boxes distribute low currents in an area equipped with 1 to 12 RJ 45 sockets. They centralise connections to ensure flexibility and that the installation is up to date. Area boxes can be installed in technical flooring or in false ceilings. for 140A, 70 mm² for 200A and upto 95 mm² for 250A.

Article Content

Key Points Of Installation And Collocation Of Distribution Box In ...

1. The power distribution system at the construction site shall be distributed in different levels. The main distribution box (or distribution room) shall be set up. The distribution box shall be set

Electrical Distribution Box Design Guide

The document provides details for designing the electrical distribution box and circuits for a residence. It includes specifications for the main circuit breaker such

DISTRIBUTION BOX

Technical Specification for Distribution Box (DB)- Accessory for LT AB Cables 1.
SCOPE 1.1 This Distribution Box (DB) should be made up of Weather & Moisture Proof Outer box with Spring loaded

What is the Ideal Installation Height for a Distribution Box

Install a distribution box at 4.5 to 5.5 feet high for safety, accessibility, and compliance. This height ensures easy use and protection from hazards.

Area distribution boxes with connectors

The boxes connect to the patch panel or enclosure by a maximum of 6 or 12 links. Area boxes can be installed in technical flooring or in false ceilings. Area boxes are offered in Cat. 5e, Cat. 6, Cat 6A,

Overhead Distribution Construction Standards

COMPATIBLE UNITS FOR REINFORCING DISTRIBUTION WOOD POLES FOR POLES LARGER THAN APPEARING ON THIS TABLE SEE TRANSMISSION WOOD POLE REINFORCING

How to determine the size, installation method and

11) When the construction site stops working for more than one hour, the power switch box shall be powered off and locked. 12) During the inspection and

Requirements for distribution box at construction site

1□ The manufacture and installation of distribution box and switch box shall meet the following requirements: 1. The distribution box shall be made of iron plate or other fire-proof insulating

mbox_om.pdf

All our boxes are 1mm thick metal and each part is powder-coated for corrosion protection. The doors are versatile and can be used on either the left or right side. In addition, for flexibility, the cable entry

Understanding Distribution Boxes: A Comprehensive Guide

A distribution box, also known as a power distribution box or electrical distribution box, is used to distribute electrical power safely to multiple

Distribution Box: Types and Functions | Axis-Electricals

A distribution box ensures that electrical supply is distributed in the building, also known as a distribution board, panel board, breaker panel, or electric panel.

Distribution box construction

The calculated dimensions in previous chapter must be used. The pipes must be installed inside the masonry with the following dimensions (using the same example of Zaree DB): 2) All pipes must be

How to Install a Distribution Box—A Comprehensive

Whether you are an electrical contractor or a construction brigade, knowing how to properly and safely install distribution boxes is the basis of

TECHNICAL SPECIFICATION FOR LT DISTRIBUTION BOX

General Technical Particulars for LT Distribution Boxes : - The L.T. Distribution Boxes should be of the dimensions as per the drawing & details in the table furnished. approved clearances and technical

How to choose a distribution box of the right size for a project based ...

If you're like most electrical professionals, picking the right distribution box for your project can feel like navigating a maze. I've been in those shoes - staring at spec sheets, worrying about

Major types of electrical boxes Technical specifications

Technical specifications There are 10 major types of electrical boxes used in Canada. All these types of boxes serve specific purposes and are offered with various features / characteristics.

LOW-VOLTAGE POWER DISTRIBUTION ALPHA BSII 125 & 250A

Intelligent powerCharacteristicRCBO + AFDD Combination DevicesSerial arcing faultsParallel arcing faults between phase conductor/neutral conductor or phase conductor/phase conductorDistribution BoardsAll the important things at a glance - Information to get you startedContact persons in your region - We are there when you need usContact email for orderingYour product in detailManualsThe fast track to the expertsTraining and tutorialsdistribution ALPHA BSII. Totally Integrated Power Distribution.See more on assets.new.siemens SlideShare

Distribution box catalogue | PDF - SlideShare

See More

This document provides specifications for various distribution boxes including dimensions, mounting sizes, and number of ways. It includes specifications for TOP-TS, TOP-TF, TOP-LS, TOP-PS, TOP

Distribution Box

Metal Distribution Box Features Continuously welded seams Foam-in-place seamless gasket 120-degree opening heavy-duty industrial hinges IP66 protection rating against dust and water according

Major types of electrical boxes Technical specifications

Where ganged sectional boxes are used, they shall be secured to metal supports or to wooden boards at least 19 mm thick that are rigidly secured to the structural units.

Distribution Box and Selection Guide

Distribution Box Selection Guide This guide provides information on how to select the appropriate Distribution Box for Electric project. If you have any

Contact Us

For more information, pricing, or custom solutions, please contact us:

Website: <https://www.charratcommunication.fr>

Email: sales@charratcommunication.fr

Phone: +33 1 42 68 93 17

Address: 15 Rue de la Paix, 75002 Paris, France

This document is for informational purposes only. Specifications subject to change without notice.

