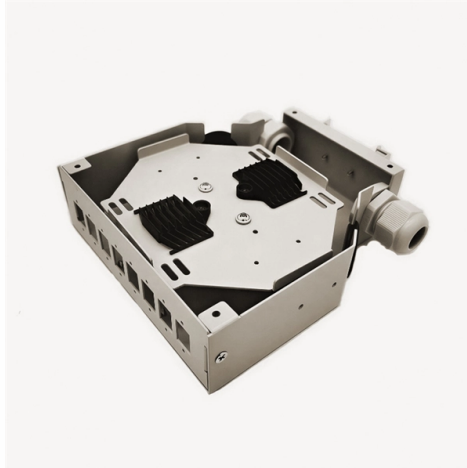


Cable tray support installation efficiency



Overview

Choosing the right cable tray system is critical for maximizing efficiency in industrial and photovoltaic cable management. For proper installation, design, and maintenance, adherence to international standards is essential. One of the most recognized frameworks globally is the IEC standard for. This publication is intended as a practical guide for the proper and safe* installation of cable ladder systems, cable tray systems, channel support systems and associated supports. Cable ladder systems and cable tray systems shall be manufactured in accordance with BS EN 61537, channel support. en completely installed, without damage either to conductors or structural system use maintain spacing or to keep cables in place when the tray is ect the minimum bend ra-dius for cables as they exit the bottom of the cable tray. In complex engineering environments, the.

Article Content

Cable Tray System Design: Professional Guide to Safety

They can understand how to construct effective, safe cable tray system design. This practitioners manual addresses the issue of load capacity,

GUIDE CABLE TRAYS TECHNICAL

In accordance with its continuous improvement policy, Legrand reserves the right to change the specifications and illustrations without notice. All illustrations, descriptions and technical information

Installation Products | ABB Electrification U.S.

ABB Installation Products is powering and protecting your world through reliable electrical products in sustainable ways. As electrical infrastructures age and new demands for power capacity increase,

Cables Connectors Adapters Patch Panels Wall Plates Racks

Since 1995, distributor of cables such as Cat5e, Cat6, Cat7 Ethernet, HDMI, computer cables, audio cables, connectors and adapters. Same day shipping!

Guide to cable support systems

Higher specific weights can only be achieved by cables with large cross-sections, which are less bendable and thus can support themselves better and, on account of their larger diameter, have a

A Guide to Installing and Supporting Electrical Cable Trays

This guide covers the critical steps, from selecting the right electrical cable tray and performing accurate cable fill calculations to managing a safe cable pull through

EAE Electric | Busbar Energy Distribution Systems

Since 1973, EAE Electric has been your reliable partner in busbar, cable trays, fit-out solutions, support systems and much more!

How to Choose the Right Cable Tray for Efficient Cable

Learn how to choose the right cable tray for electrical installations. Explore different designs, materials, and fastening methods to ensure optimal

Best Practice Guide to Cable Ladder and Cable Tray Systems

These guidelines will be particularly useful for the design, specification, procurement, installation and maintenance of these systems. Cable ladder systems and cable tray systems are designed for use

Burndy Cable Support Systems – Reliable Cable Management Solutions

With a commitment to durability, reliability, and safety, Burndy offers innovative products designed to streamline cable installations, reduce maintenance, and ensure secure cable routing in demanding

How to Calculate the Cable Tray Support Quantity

Learn how to accurately calculate cable tray support quantities in electrical installation projects. Our guide covers methods,

Cable Tray Technical Guide A practical guide to product selection and ...

A practical guide to product selection and installation This guide for engineers and installers has been developed by ABB as a practical reference regarding cable tray characteristics, installation, and

A T& B Cable Tray Metallic cable tray

Cable tray systems, including trays, supports, fittings and other materials, are generally much less expensive than conduit wiring systems. In addition, major cost savings are generated by the relative

Best Practices for Installing Cables in Trays

Learn the best practices for installing cables in trays. This guide covers essential steps, technical requirements, and key details

#electricalengineering #cabletray #mep #electricaldesign # ...

□ The Complete Cable Tray Guide for Electrical Engineers Efficient cable management is a critical part of every electrical installation. Choosing the right cable tray system improves safety ...

Guide to cable support systems

Cable support systems from OBO Our products for your project When developing our cable support OBO can offer reliable solutions for systems, three attributes are at the routing and fastening cables

Cable Tray Technical Guide A practical guide to product selection and ...

In designing supports for a cable tray system, consideration should be given to the loads associated with future cable additions and any additional loading that may be applied to the cable tray system (e.g.,

How to Choose the Right Cable Tray Support for Your

Selecting the correct cable tray support is crucial for ensuring safety, compliance, and efficiency in electrical installations. The right support system can

Cable Tray Installation and Cable Handling Method

Efficient cable tray installation and proper cable handling are critical for ensuring the reliability and safety of electrical systems. Adherence to these guidelines is

CABLE TRAY SYSTEMS GUIDE

Steel Ladder System Hubbell's NEXTFRAME® Ladder Tray is the effective and widely used cable runway that supports and delivers bundles of cable between cabinets, racks, and closets, along

Cable Tray Supports & Clamps

MP Husky cable tray clamps are the most reliable, highest quality, and cost effective cable tray clamps in the industry. Proper cable tray support is an integral part of any installation, and having the best

Maximize Efficiency with the Right Cable Tray System

Choosing the right cable tray system is critical for maximizing efficiency in industrial and photovoltaic cable management. This practical guide explores how to select,

Cablofil 4x21x2mm Electro-Zinc Steel Cable Tray Mounting Rail 3m

Electro zinc C profile mounting rail for cable support systems, enabling fast fixing of wire mesh trays, sheet metal trays and ladders with keyhole design for efficient installation.

IEC Standard for Cable Tray: Complete Technical Guide

For proper installation, design, and maintenance, adherence to international standards is essential. One of the most recognized frameworks

Cablofil CF30/600EZ Electro Zinc Steel Wire Cable Tray 3m

Electro-zinc steel wire cable tray for indoor cable management. Open mesh design supports ventilation, visibility and efficient installation.

DK-07 WOOD

A dedicated support bracket reinforces the GPU from multiple directions, reducing sag and ensuring stable installation for large, heavy graphics cards. Note: Vertical GPU installation requires a PCIe

B-Line series Cable Tray Design Considerations

Our wind certification report provides you with list of acceptable B-Line series cable tray supports, fittings and covers based off of the environmental conditions, cable loading, and type of cable tray in your

100+ Essential Questions Answered About Cable Trays:

Discover over 100 expert answers about cable trays, covering key topics like material selection, load capacity, installation methods, and maintenance.

Contact Us

For more information, pricing, or custom solutions, please contact us:

Website: <https://www.charratcommunication.fr>

Email: sales@charratcommunication.fr

Phone: +33 1 42 68 93 17

Address: 15 Rue de la Paix, 75002 Paris, France

This document is for informational purposes only. Specifications subject to change without notice.

