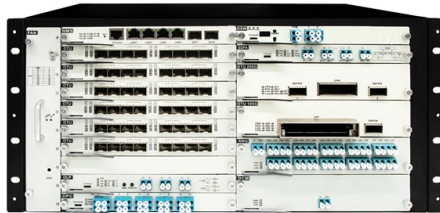


Boardcom Fiber Optic Switch



Overview

The Broadcom® BCM78919 102. 4-Tb/s co-packaged optics switch is a highradix, high-bandwidth network switching device supporting up to 64 × 1.6TbE, 128 × 800GbE, 256 × 400GbE, 512 × 200GbE, 512 × 100GbE, or 512 × 50GbE ports. The device family features a maximum of 64 integrated Condor 3-nm SerDes. If Broadcom says that co-packaged optics is ready for prime time and can compete with other ways of linking switch ASICs to fiber optic cables, then it is very unlikely that Broadcom is wrong. The company that is the modern Broadcom has a long and deep - and acquired - expertise in optical. Broadcom is shipping the industry's first 51. Baily integrates eight silicon photonics 6. Its semiconductor portfolio includes data center switches and routers, set-top/CMTS, cable modems, PON/DSL, Ethernet NICs, filters and amplifiers, ASIC, wireless connectivity solutions. CORNING, N., May 15, 2025 (GLOBE NEWSWIRE) -- Broadcom Inc. In addition to the 200G/lane breakthrough.

Article Content

Corning Optical Communications | Fiber Optic

We deliver optical connectivity solutions for every segment of the network, including carriers, data centers, in-building networks, and original equipment manufacturers

The 200G/lane CPO pushes optical interconnect

Broadcom's CPO legacy Broadcom began its CPO journey in 2021 with the launch of the first-generation Tomahawk 4-Humboldt chipset, which

CPO Switch: Next-Generation Integrated Optical

CPO switches shorten the electrical signal path, reduce power consumption, and decrease the number of pluggable modules by co-packaging optical modules with

Broadcom Announces Third-Generation Co-Packaged Optics (CPO)

Broadcom Announces Third-Generation Co-Packaged Optics (CPO) Technology with 200G/lane Capability Key partner milestones with CPO switches demonstrate ecosystem readiness

Inside Nvidia's \$4B Optical Strategy—and Why CPO Changes

This has led to optical transceivers becoming a key solution. Optical transceivers take electrical signals sent through copper traces in ASIC switches and convert them into optical signals.

First 51.2-Tbit/s co-packaged optical Ethernet switch for

Broadcom is shipping the industry's first 51.2 terabits per sec (Tbit/s) co-packaged optics (CPO) Ethernet switch to customers for scalable AI systems.

The Third Time Will Be The Charm For Broadcom

There have been plenty of naysayers about CPO in the datacenter, but for many years now Broadcom's techies have told us that using CPO inside of

Corning Collaborates with Broadcom To Accelerate AI Data Center ...

Broadcom's Baily CPO system incorporates eight silicon photonics-based, 6.4 TBps optical engines that are co-packaged with Broadcom's StrataXGS® Tomahawk®5 Ethernet switch

Nvidia Unveils Game-Changing Optical Network Switch

Nvidia's new optical network switch, announced at GTC, promises to revolutionize AI data centers by drastically cutting power consumption and

102.4 Tb/s | Co-Packaged Optics Switch | AI/ML

See how Broadcom's Davisson co-packaged optics switch meets the requirements of next gen data center, cloud computing, and AI/ML.

First 51.2-Tbit/s co-packaged optical Ethernet switch for

“Our partnership with Broadcom to design systems with highly integrated co-packaged optics will enable a more power efficient future network.

51.2-Tb/s Multilayer CPO Switch with 100G SerDes BCM78909

The Broadcom® BCM78909 51.2-Tb/s Co-Packaged Optics Switch is a high-radix, high-bandwidth network switching device that supports up to 64 × 800GbE, 128 × 400GbE, 256 × 200GbE, 320 ×

Photonics Is Where AI Infrastructure Meets Physical Limits Copper ...

Sergey (@SergeyCYW). 999 likes 21 replies. Photonics Is Where AI Infrastructure Meets Physical Limits Copper interconnects are reaching practical limits inside high-performance data

Broadcom CPO: Highest Power Efficiency and

Broadcom's co-packaged optics (CPO) technology is based on highly integrated Silicon Photonics and is purpose built to address the demanding needs of AI

AI infrastructure accelerates the shift to scalable optical systems ...

Broadcom also introduced the Tomahawk 6 with its 3rd generation CPO Ethernet switch, delivering 102.4 Tbps switching capacity and a claimed 70% reduction in optical interconnect power

Broadcom bets big on AI with new co-packaged optic

Optics are now even closer to the switch silicon, a move Broadcom claims provides dramatic link flap reductions and power loss in Davisson,

Broadcom unveils "quantum-safe" switches amid

Broadcom's latest line of switches then aren't some overly complicated interconnected hardware requiring photons and dedicated fiber optics.

Products

Broadcom's diverse product portfolio includes leading semiconductor and infrastructure software solutions. Its semiconductor portfolio includes data center switches and routers, set-top/CMTS, cable

Corning and Broadcom Team on Co-Packaged Optical

Broadcom's Bailly CPO system incorporates eight silicon photonics-based, 6.4 TBps optical engines that are co-packaged with Broadcom's

Broadcom Showcases Industry-Leading Solutions for Scaling AI ...

“From the industry's first and only shipping 102T Ethernet switch to our first-to-market 400G/lane optical DSPs, we are out-innovating the market to solve the most complex power and bandwidth challenges

25.6 Tb/s Multilayer Switch with Co-packaged Optics

The Broadcom BCM56999 is a high-radix, high-bandwidth network switching device that delivers high-bandwidth, glueless network connectivity of up to 25.6 Tb/s on

Broadcom (AVGO): Company Profile, Stock Price,

The other provides infrastructure, including Ethernet switching and routing and fiber-optic transmitter and receiver components.

Co-Packaged Optics Market Market Report 2026-2036 | Future

Global co-packaged optics market report 2026-2036. Covers CPO architecture, AI data centre adoption, NVIDIA vs Broadcom CPO strategies & forecasts.

Broadcom Announces Third-Generation Co-Packaged Optics (CPO)

Broadcom's leadership in CPO is driven not only by its cutting-edge switch ASICs and optical engine technology but also by a comprehensive ecosystem of passive optical components,

Goldman Sachs report confirmed what retail has been chasing since

The architecture doesn't reverse Once every high-speed GPU link goes optical, copper doesn't come back. It's a permanent architectural shift. Most retail investors rotate every two weeks

Broadcom Showcases Industry-Leading Solutions for Scaling AI ...

These industry-leading solutions - including the 3.5D XPU, 102.4T Ethernet switch with co-packaged optics (CPO), 400G/lane optical DSP, 200G/lane Ethernet retimers and AEC, and PCIe

Broadcom launches third generation CPO

Broadcom Inc. has announced significant advancements in its CPO technology with the launch of its third-generation 200G/lane product line. In addition, the company has demonstrated the

Corning and Broadcom Team on Co-Packaged Optical

Per the partnership, Corning will supply optical components for Broadcom's Baily, a CPO-based 51.2 Tbps ethernet switch. Broadcom's Baily

Fiber Optic Patchcords and Pigtails |

Premium fiber optic patchcords and pigtails for efficient connections. Fiber4u offers 20 years of expertise and global delivery.

Contact Us

For more information, pricing, or custom solutions, please contact us:

Website: <https://www.charratcommunication.fr>

Email: sales@charratcommunication.fr

Phone: +33 1 42 68 93 17

Address: 15 Rue de la Paix, 75002 Paris, France

This document is for informational purposes only. Specifications subject to change without notice.

